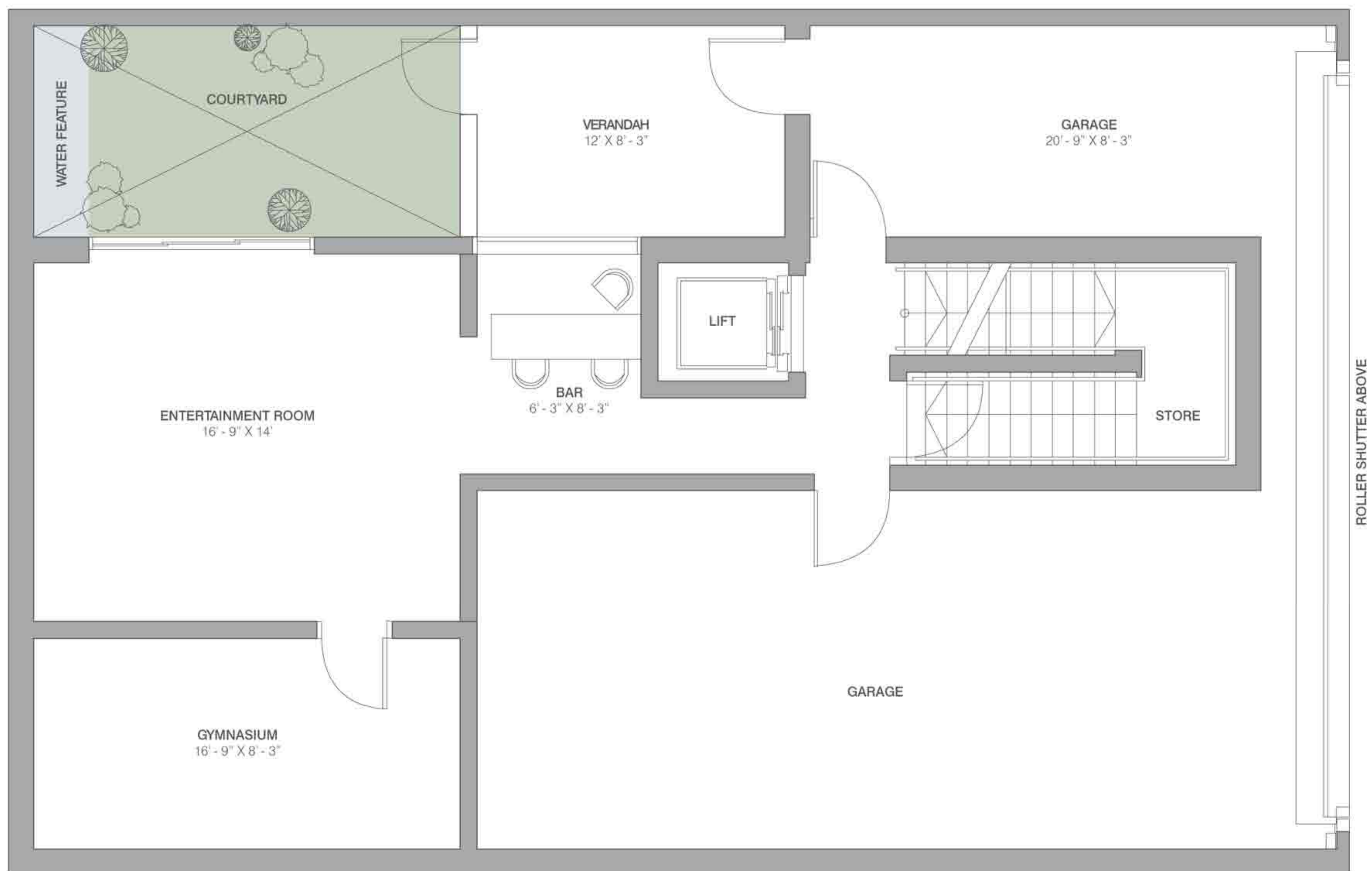


# VILLAS

SMALL - 7000 SQ.FT. (650.32 SQ.MTR.)

# PRIMANTI

VILLAS AND RESIDENCES



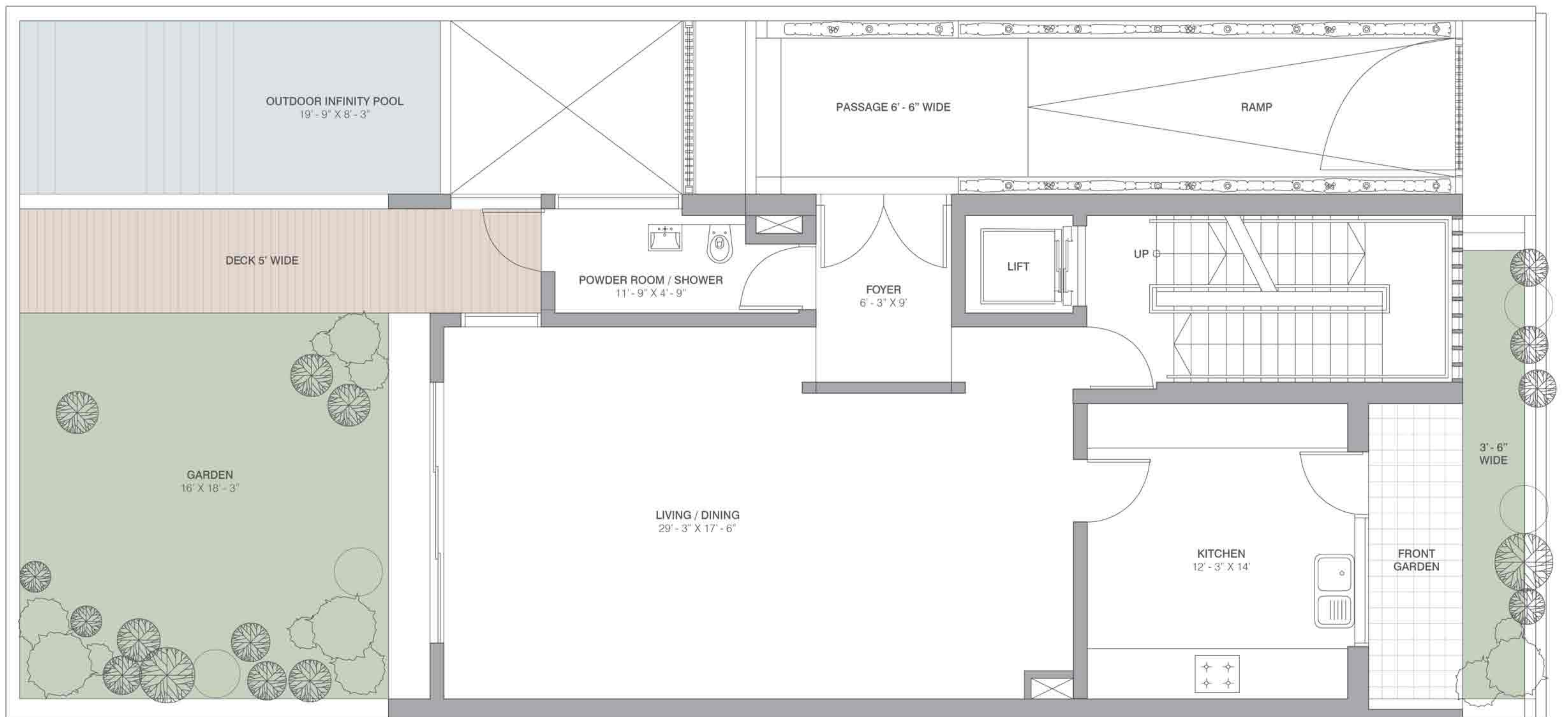
BASEMENT

# VILLAS

SMALL - 7000 SQ.FT. (650.32 SQ.MTR.)

# PRIMANTI

VILLAS AND RESIDENCES



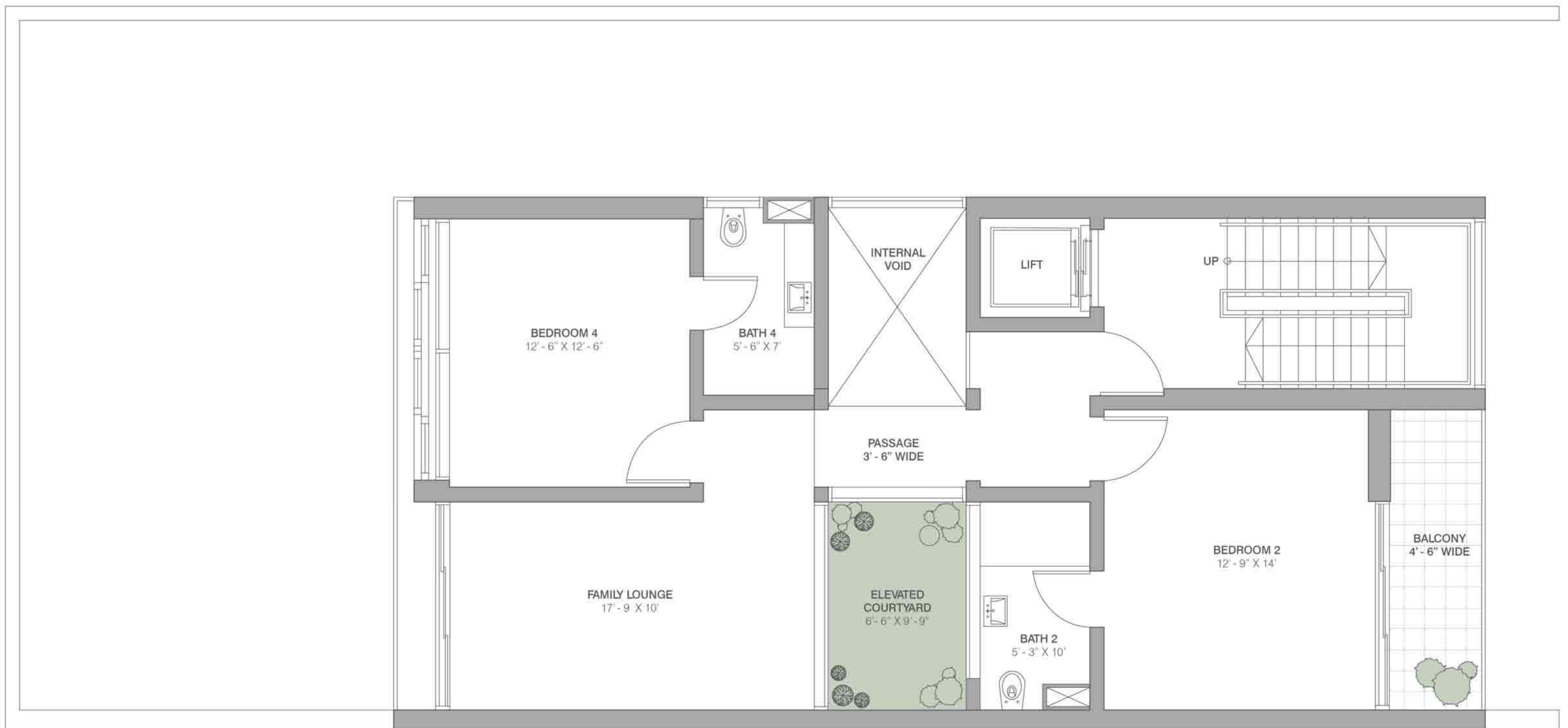
GROUND FLOOR

# VILLAS

SMALL - 7000 SQ.FT. (650.32 SQ.MTR.)

# PRIMANTI

VILLAS AND RESIDENCES



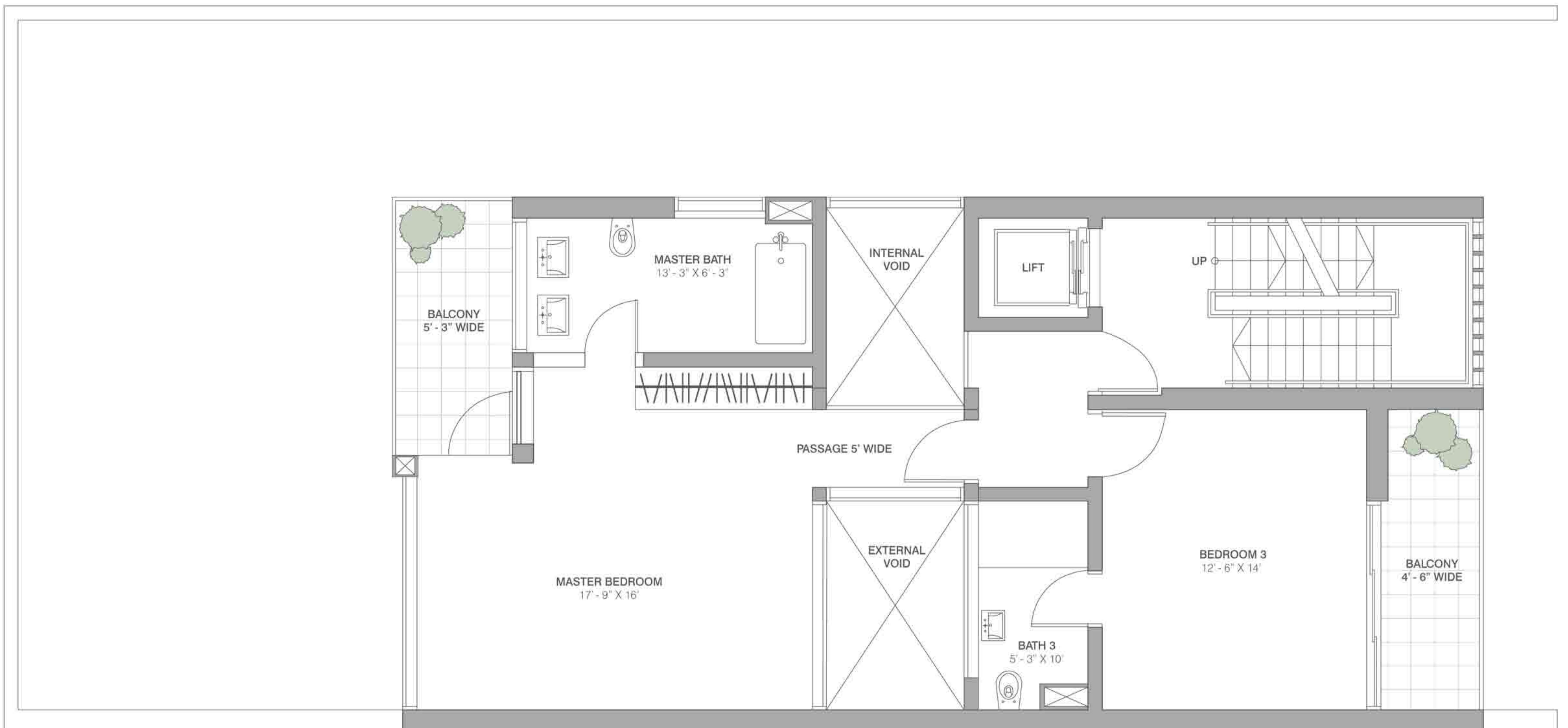
FIRST FLOOR

# VILLAS

SMALL - 7000 SQ.FT. (650.32 SQ.MTR.)

# PRIMANTI

VILLAS AND RESIDENCES



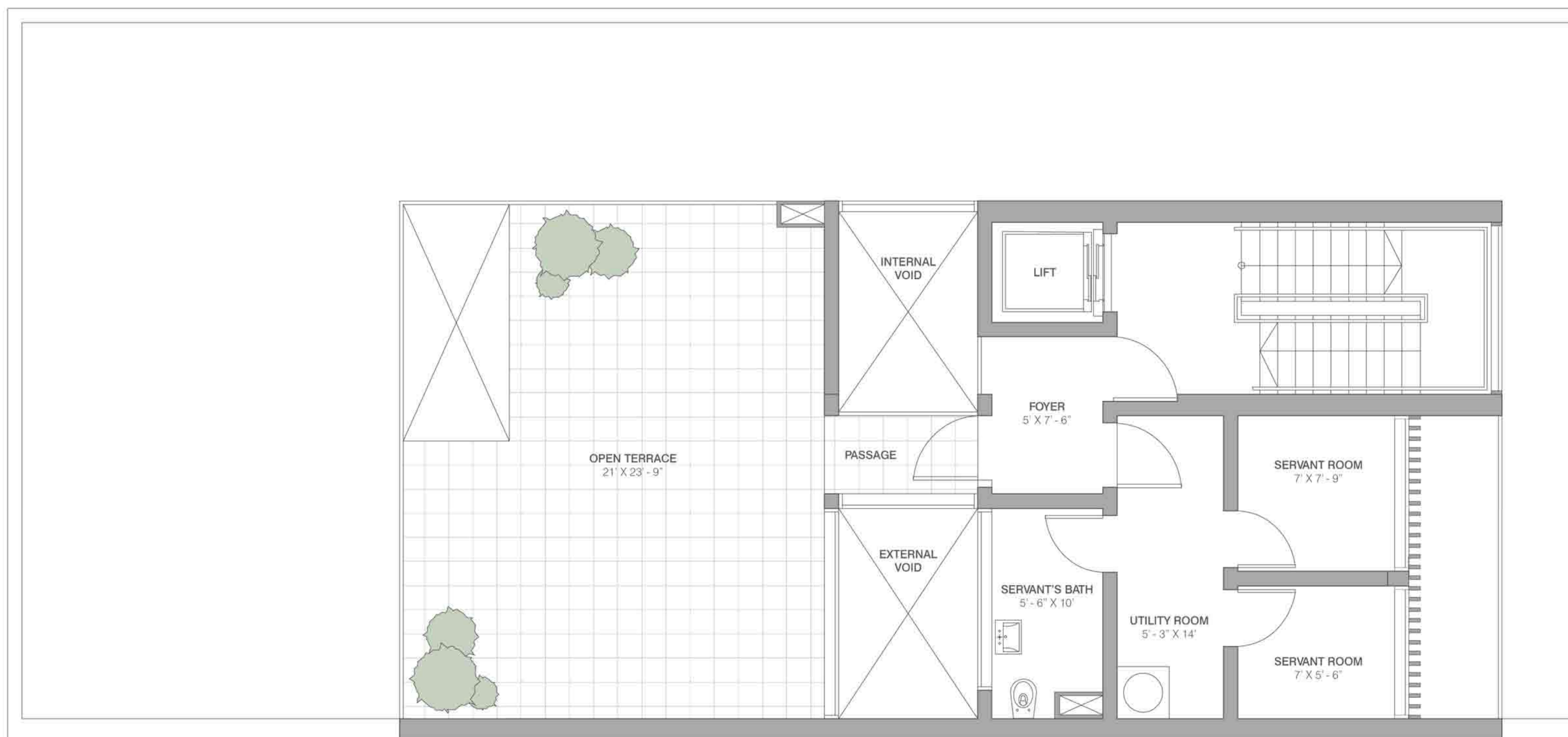
SECOND FLOOR

# VILLAS

SMALL - 7000 SQ.FT. (650.32 SQ.MTR.)

# PRIMANTI

VILLAS AND RESIDENCES



TERRACE